



JCDBeacon

4AA Version

4.0
Bluetooth™

Eddystone



Introduction

- JCDBeacon is the beacon designed by JCDecaux which sends Bluetooth Low Energy (BLE) advertising packets.
- JCDBeacon can transmit from 1 to 5 messages. These messages may be compatible with:
 - Apple iBeacon® standard
 - Google Eddystone® et Physical Web® standard
- JCDBeacon allows to have smartphones, where a target application is installed, to trigger a specific action when entering the area of emission of the JCDBeacon
- JCDBeacon has been designed to face all environmental constraints for JCDecaux installation. Indoor, outdoor, dirty environments, ...
- JCDBeacon uses batteries that allow, at full power, to run for a minimum of 30 month (2,5 years). Real time updated planned date of batteries replacement is communicated to maintenance teams.

General information



Performance

- Uses best available components on market :
 - o Bluetooth Nordic Semi-Conductors Chipset
 - o Assembly made in Europe
 - o JCDecaux specific firmware

Transmission distance :

- From 0,5m to 60m in open field

Harshness and Sustainability

- Forecasted minimal (except batteries) operations hours : 50000
- Operates 24/7
- Operating temperatures : -30° to +70°
- Bearable temperature gradient : +50°C in 6 heures
- Humidity : from 20% to 90%
- Impact resistance : IK10
- Dust and water ingress resistance : from IP44 to IP67 (by fastening screws of the cover)
- Vibration and Shock resistance : Class AG2 according to EN600685-2-64
- Fall safe resistance: 1m on hard floor (batteries may have to be repositioned).
- Batteries life time : 2,5 years minimum at full power (up to 6 years at normal operation)

Security and anti-hacking

- A same MAC Address is used for all the beacons in the same region.

Installation type

Can be used: indoor, outdoor in or outside of a JCDecaux product

Possible :

- - Screw through the back side of the casing
- - Tie Rap® or Colson®
- - Double sided tape (already taped on the JCD Beacon)

Updates :

- Advertising messages update: over the air, password protected, with a dedicated app.
- Firmware update : over the air, password protected, with a dedicated app
- Reboot by using a magnet on the front face (hall effect switch)

Certifications

- CE
- FCC (US), SRRC (Chine) on demand.

General information



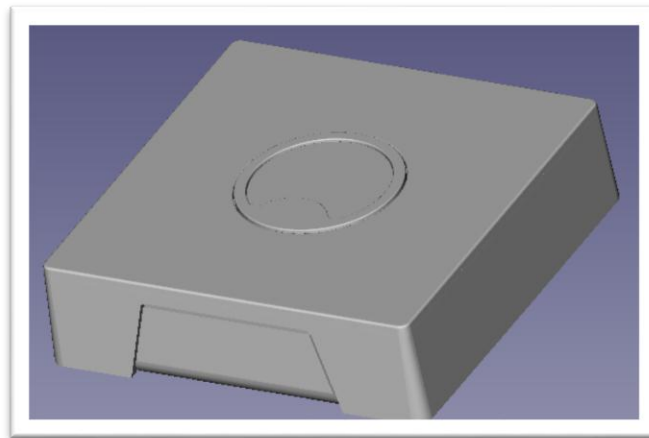
Sustainable Developpement

- Mandatory recycling of Li-Ion batteries (minimal life time of the batteries 2,5 years)
- A specific maintenance message, updated on the fly, based on the number of emitted messages and their transmission power allows to run as close as possible to the real end of life of the batteries
- Mandatory recycling of the PCB and its components (minimal life time 5,7years)

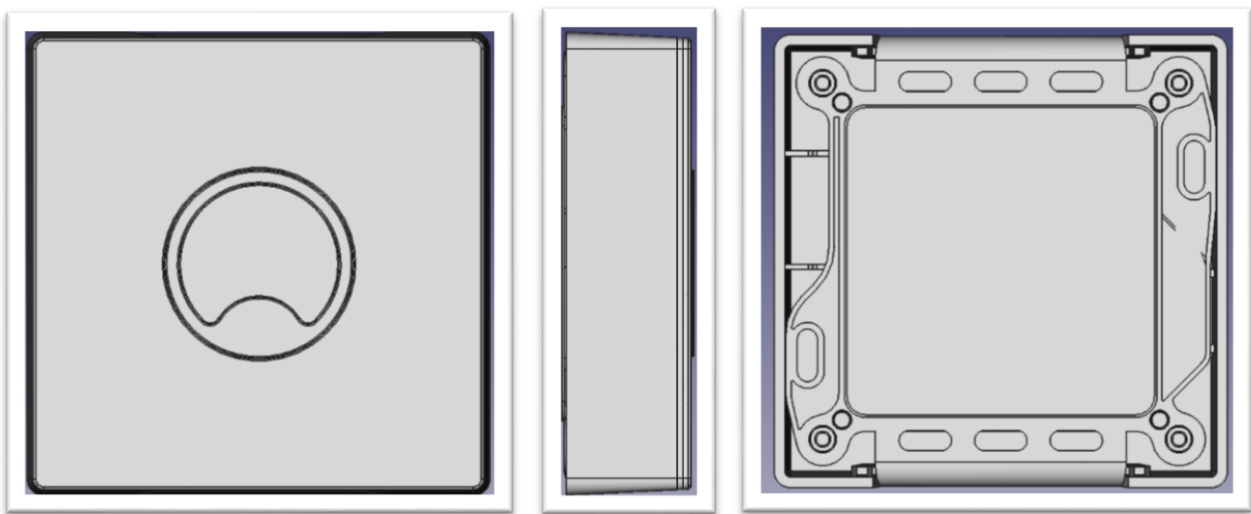
Dimensions

External dimensions : L : 84 mm – W : 84mm – He : 22mm

Images



Images



Photos



Product Structure

Complet Beacon

- ABS Plastic casing

 - Base

 - Batteries place holders (x2)

 - Connectors for batteries (up to 4 3,6V batteries in parallel)

 - Top Cover

 - Hiding cover

- Electronic Board (PCB)

 - Bluetooth : Chipset

 - Antenna

- 3,6V Li-Ion batteries

Technical data

Bluetooth Chipset power : from -30dBm (1 μ W) to 4 dBm (2,5mW)

Maximal Antenna Gain (omni antenna) : : 2,75dBm at 2,54GHz